





PELAGIA
YACHTING

M/Y SPERANZA II



Sunbeds



Air Conditione



Sound System



Stabilisers at
anchor



Stabilisers
underway



WC



Wifi



EXTERIOR DESIGN











INTERIOR DESIGN













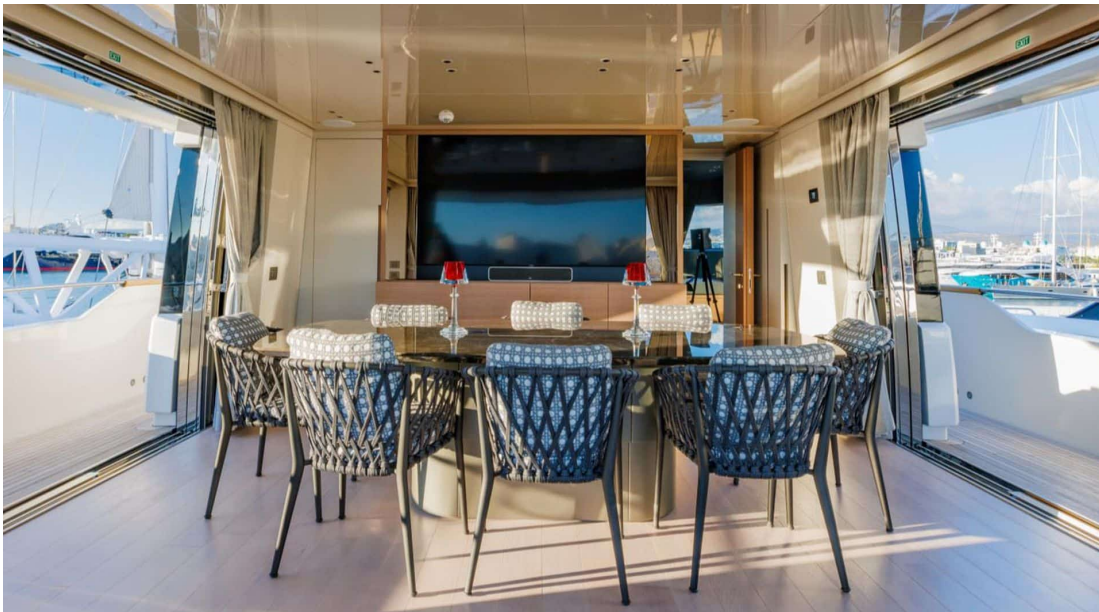
Description



Embark on a journey of luxury and elegance with the magnificent Motor Yacht - Flybridge, M/Y SPERANZA II. Crafted by San Lorenzo, this stunning vessel is a true masterpiece on the water. With its sleek design and spacious layout, this yacht offers a unique experience for those looking to purchase a yacht that exudes class and sophistication. From the five beautifully appointed cabins to the top-of-the-line engine and generator, every detail has been carefully considered to ensure maximum comfort and style.

Measuring 28.93 meters in length and boasting a Gross Tonnage of 180 GT, M/Y SPERANZA II is sure to impress even the most discerning yachting enthusiasts. With a cruising speed of 13 knots and a maximum speed of 18 knots, this ship combines power with grace for an unforgettable sailing experience. Equipped with luxurious amenities such as air conditioning, sound system, stabilisers at anchor and underway, and WiFi access, every moment spent aboard this yacht is pure bliss.

Pelagia Yachting is your trusted partner in purchasing this extraordinary vessel. With years of experience in the industry, our team of dedicated professionals will provide you with tailor-made services to ensure that your yachting dreams become a reality. From finding the perfect boat to guiding you through the purchase process, we are here every step of the way. Don't miss out on the opportunity to own one of the finest Motor Yachts - Flybridge on the market today - contact Pelagia Yachting for more information on how you can make M/Y SPERANZA II yours!



Specifications

Overview



| | |
|------------|----------------------------|
| Price | 7 950 000€ |
| Builder | San Lorenzo |
| Yacht type | Motor Yacht - Flybridge |
| Flag | Malta |
| VAT | VAT paid |
| Year built | 2021 |

Dimensions



| | |
|---------------|------------------------|
| Length | 28.93 m / 94.91 ft. |
| Beam | 7.6 m / 24.93 ft. |
| Draft | 1.95 m / 6.4 ft. |
| Gross Tonnage | 180 |

Construction



| | |
|-------------------|------------|
| Hull Construction | GRP |
| Statut | Commercial |
| Classification | RINA |

Performances & Capacities



| | |
|----------------|----------|
| Max Speed | 18 knots |
| Cruising Speed | 13 knots |
| Fuel Tanks | 15700 L |
| Water Tank | 2500 L |

Engine & Generator



- Engines : x2 MTU 10V - 2000 - M86 - 1,380 HP
- Generators : 2 x Kohler 45KW each

Accommodation



| | |
|--------------------------|---------|
| Guest Sleeping Cabins | 11 5 |
|--------------------------|---------|