





PELAGIA  
YACHTING

# M/Y TRIBU



Fridge



Kitchen



Shower



Sunbeds



Beach Club



Gym Kit



Jacuzzi



Stabilisers at anchor



Stabilisers underway



Tender



Tender 8m+ boat



# EXTERIOR DESIGN







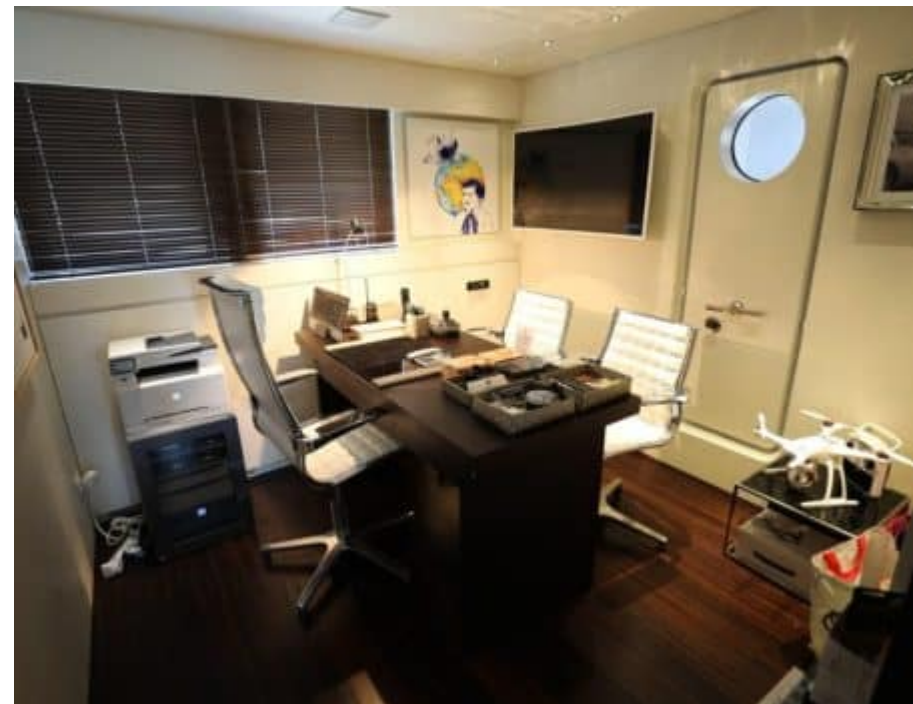
# INTERIOR DESIGN















# Description



Experience the ultimate in luxury yachting with M/Y TRIBU. This motor yacht is available for purchase through Pelagia Yachting and offers a tailor-made experience to satisfy all your needs. At 50.5m long and 10.13m wide, this magnificent vessel has 6 cabins and can accommodate 11 guests in complete comfort during their unique journey at sea.

Fitted with modern engines and advanced technology, M/Y TRIBU is able to cruise at 12 knots and reach a maximum speed of 14 knots - perfect for exploring the world's most beautiful locations in style. On board you will find stunning amenities such as a jacuzzi, gym equipment, an 8m+ tender boat / day boat, beach set-up, canoeing gear, electric bicycles and much more!

By purchasing M/Y TRIBU through Pelagia Yachting you are guaranteed excellent customer service from our team of experienced professionals who understand the nuances of yachting on the market today. With our network of reliable suppliers we provide full support throughout the entire purchase process so that you can obtain all the necessary information about your dream yacht without delay or stress involved. Get in touch now to receive personalised advice about making your purchase of M/Y TRIBU a reality!



# Specifications

## Overview



|            |              |
|------------|--------------|
| Price      | 15 900 000€  |
| Yacht type | Motor Yacht  |
| Flag       | Malta        |
| VAT        | VAT not paid |
| Year built | 2007         |
| Year refit | 2023         |

## Dimensions



|               |                     |
|---------------|---------------------|
| Length        | 50.5 m / 165.68 ft. |
| Beam          | 10.13 m / 33.23 ft. |
| Draft         | 3 m / 9.84 ft.      |
| Gross Tonnage | 783                 |

## Construction



|                |            |
|----------------|------------|
| Statut         | Commercial |
| Classification | RINA       |

## Performances & Capacities



|                |          |
|----------------|----------|
| Max Speed      | 14 knots |
| Cruising Speed | 12 knots |
| Fuel Tanks     | 105000 L |
| Water Tank     | 20000 L  |

## Engine & Generator



## Accommodation



|                |    |
|----------------|----|
| Guest Sleeping | 11 |
| Cabins         | 6  |