



PELAGIA
YACHTING

M/Y BARTALI



Length
47.05m 154.36 ft.



Cabins
5



Year Built
2016



Price
19800000
16700000



PELAGIA
YACHTING

M/Y BARTALI



Beach Club



Jacuzzi



Outdoor Cinema



Stabilisers at anchor



Stabilisers underway



Swimming Pool



Tender



Waterskiing kit

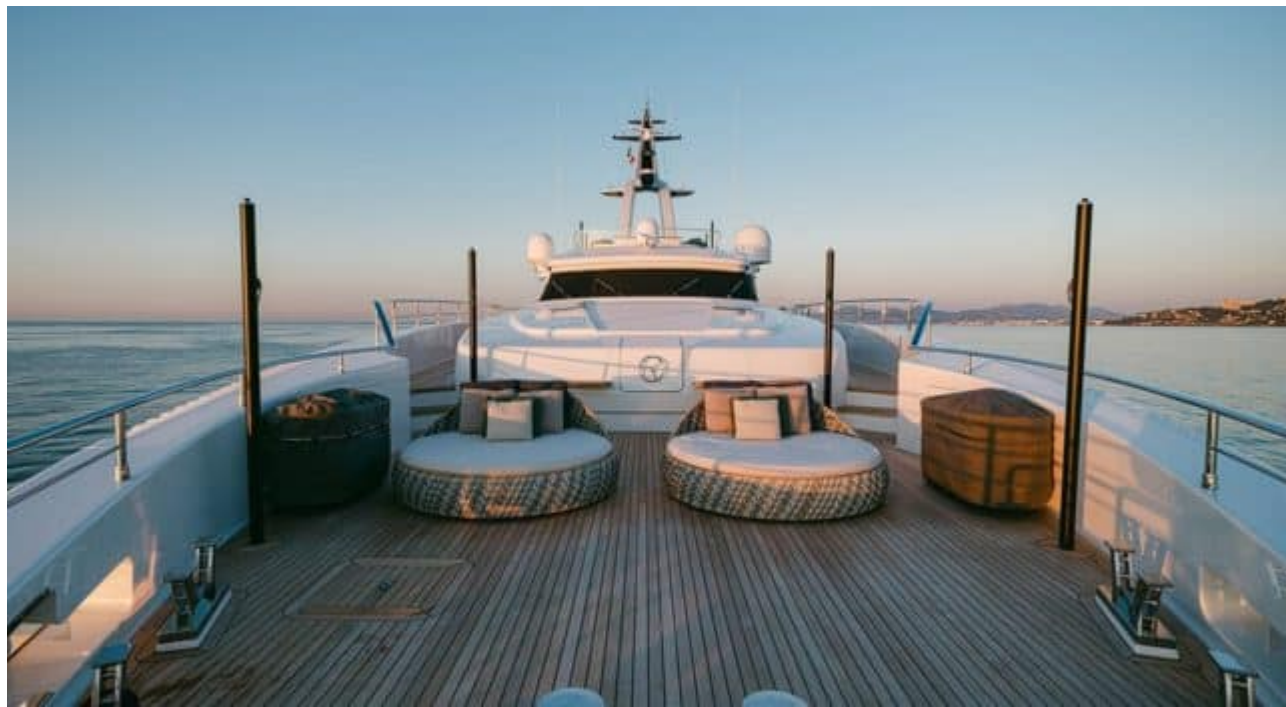


EXTERIOR DESIGN











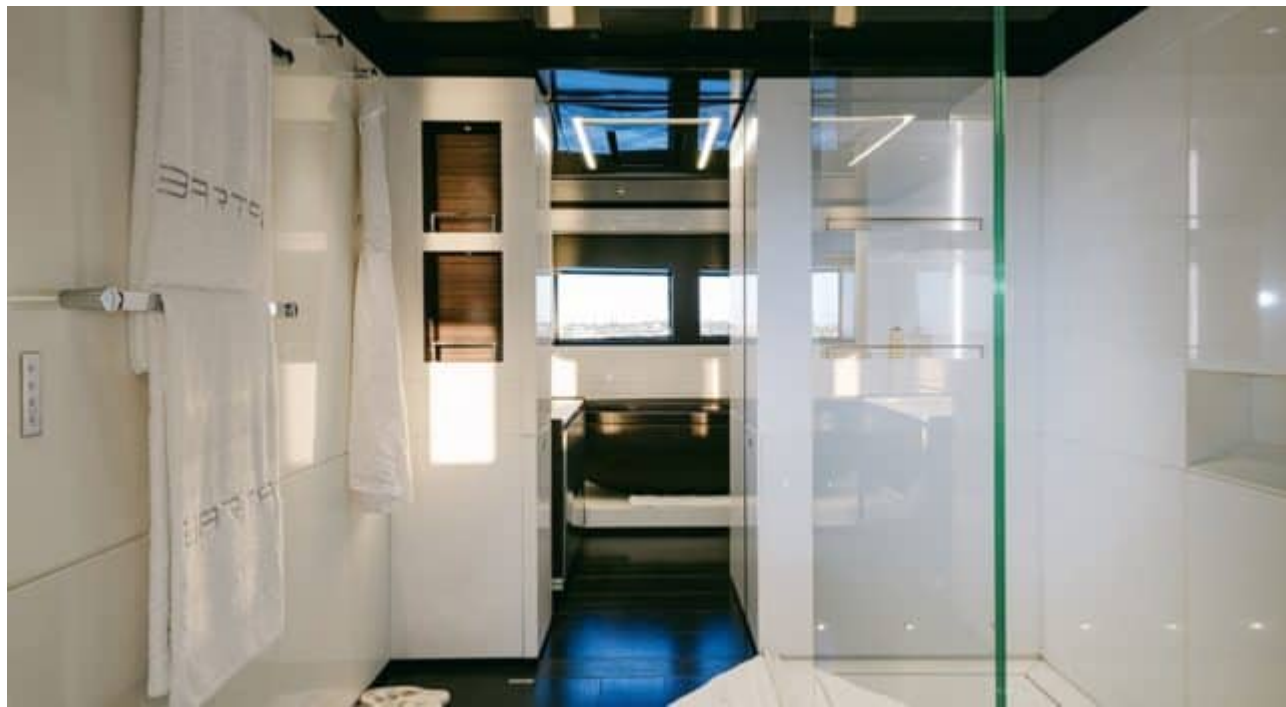


INTERIOR DESIGN











Description



Experience the ultimate luxury and adventure with the Motor Yacht - Flybridge M/Y BARTALI. Crafted by Wider, this stunning yacht offers a unique experience for those looking to purchase a yacht of unparalleled quality and style. With its sleek design and top-of-the-line features, M/Y BARTALI is sure to impress even the most discerning buyers.

At 47.05 meters long and with 5 cabins, this magnificent vessel can comfortably accommodate up to 11 guests. The spacious layout includes a beach set-up, Jacuzzi, outdoor cinema, swimming pool, and more - perfect for entertaining friends and family while cruising through the crystal-clear waters of the world's most beautiful destinations.

Pelagia Yachting, a leading company in luxury yacht sales, is proud to offer M/Y BARTALI for sale in Antibes. With tailor-made services and a team of dedicated professionals at your disposal, purchasing this exceptional yacht will be an unforgettable experience. Don't miss out on the opportunity to own one of the best motor yachts on the market - contact Pelagia Yachting today for more information!



Specifications

Overview



| | |
|------------|----------------------------|
| Price | 19 800 000€ |
| Builder | Wider |
| Yacht type | Motor Yacht - Flybridge |
| Flag | Cayman Islands |
| VAT | VAT not paid |
| Year built | 2016 |

Dimensions



| | |
|---------------|-------------------------|
| Length | 47.05 m / 154.36 ft. |
| Beam | 8.6 m / 28.22 ft. |
| Draft | 1.98 m / 6.5 ft. |
| Gross Tonnage | 484 |

Construction



| | |
|-------------------|-----------|
| Hull Construction | Aluminium |
| Statut | Private |
| Classification | MLC |

Performances & Capacities



| | |
|----------------|----------|
| Max Speed | 14 knots |
| Cruising Speed | 13 knots |
| Fuel Tanks | 45000 L |
| Water Tank | 12000 L |

Engine & Generator



x2 MAN Diesel-electric - 712 HP/CV

Accommodation



| | |
|--------------------------|---------|
| Guest Sleeping Cabins | 11 5 |
|--------------------------|---------|