



*M/Y PANDION  
PEARL*



Length  
**44.5m** 146 ft.



Cabins  
**5**



Year Built  
**2021**



Price  
**24900000**



PELAGIA  
YACHTING

# M/Y PANDION PEARL

- Sound System
- Bar
- Beach Club
- Gym Kit
- Stabilisers at anchor
- Stabilisers underway
- Swimming Pool
- Tender x2
- E-surf x 2
- Floating dock
- Jetski
- Kayaks x 2
- Scuba diving Kit
- Seabob x 3
- Wakeboard
- Waterskiing kit



# EXTERIOR DESIGN

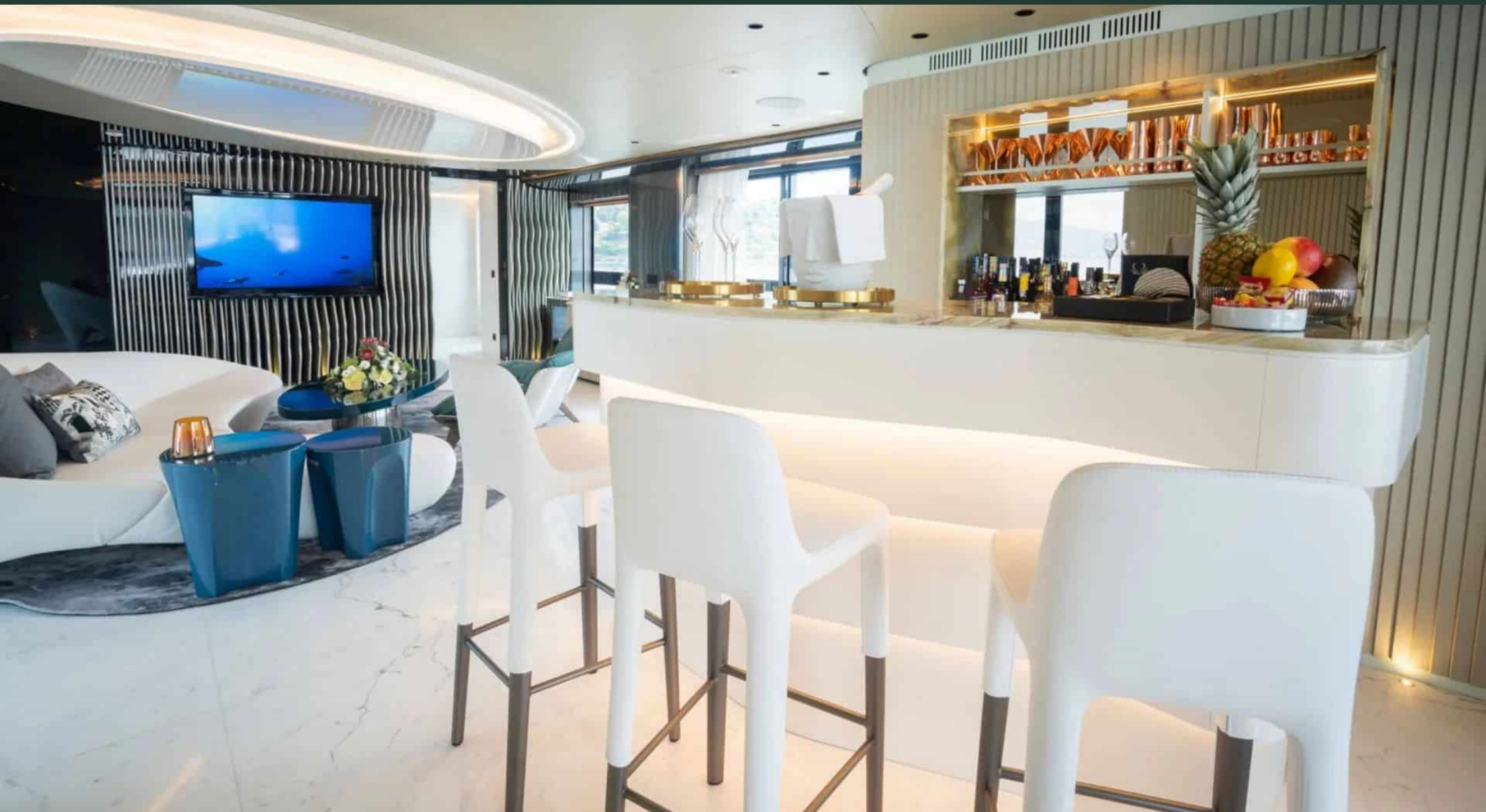








# INTERIOR DESIGN















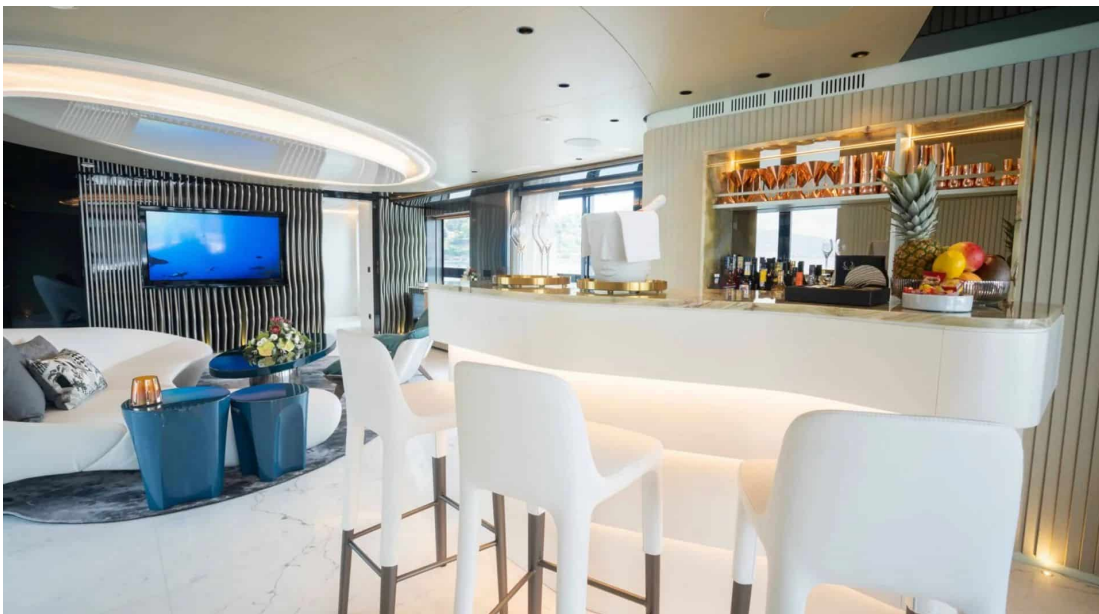
# Description



Embark on a journey of luxury and opulence with the exquisite Motor Yacht - Flybridge, M/Y PANDION PEARL. Crafted by San Lorenzo, this 44.5m beauty is a true masterpiece on the water, offering unparalleled comfort and style. With 5 lavish cabins that can accommodate up to 12 guests and a crew of 9 dedicated professionals at your service, every detail has been carefully designed to provide a unique experience for those who appreciate the finer things in life.

Step onboard and be mesmerized by the spacious deck areas, state-of-the-art equipment, and top-of-the-line amenities that M/Y PANDION PEARL has to offer. From the sound system to the beach club, gym kit to swimming pool, this yacht is truly a floating paradise. With a cruising speed of 12 knots and a maximum speed of 16 knots powered by x2 MTU engines generating 1,920 HP each, you can glide through the waters with ease and elegance.

Pelagia Yachting is your trusted partner in purchasing this exceptional vessel. Our team of experts will guide you through every step of the process with tailor-made services to ensure your buying experience is seamless and stress-free. Don't miss out on the opportunity to own one of the most luxurious Motor Yacht - Flybridge on the market today. Contact Pelagia Yachting now for more information on how you can make M/Y PANDION PEARL yours!



# Specifications

## Overview



Price	24 900 000€
Builder	San Lorenzo
Yacht type	Motor Yacht - Flybridge
VAT	VAT not paid
Year built	2021

## Dimensions



Length	44.5 m / 146 ft.
Beam	9 m / 29.53 ft.
Draft	2.3 m / 7.55 ft.
Gross Tonnage	490

## Construction



Hull Construction	Aluminium
Statut	Commercial
Classification	ABS

## Performances & Capacities



Max Speed	16 knots
Cruising Speed	12 knots
Fuel Tanks	41000 L
Water Tank	9200 L

## Engine & Generator



x2 MTU - 12V M96L - 1,920 HP/CV

## Accommodation



Guest Sleeping	12
Cabins	5